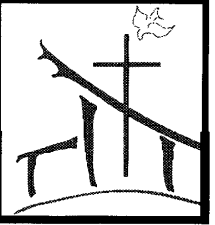


The Pathway

Newsletter of the Webster Presbyterian Church
Webster, New York



WHAT'S INSIDE

Page No.

2. Worship, Stewardship
3. Adult Ed., Lectionary,
Women's Bible Study
Memory Verse
4. Mission Opportunities to Give
5. Mission Thank Yous
Children's Christian Ed.
Poinsettias
6. Youth, Family News

December 2020



Vol. L No. 10

First Sunday of Advent

November 29- 9:30- a.m.
Communion

Christmas Eve

Lessons and Carols - 5:00 p.m.
Communion and Candlelight



Due to Covid-19 and our limited attendance, it has been decided that there will be only one service on Christmas Eve. Please call the church office to make a reservation if you choose to attend. As with our Sunday services, you can watch on Zoom if you choose to not join us in person.

Beloved,

With the crucifixion of Christ, God changed the cross from an instrument of suffering and systemic oppression into the defining symbol of our faith and the love of God. God turned the meaning of the Cross upside down. (Bookish people call that 'symbolic inversion'.) In other words, God turned something bad into something good. The story of the Cross is the story of God fixing things.

The Webster Presbyterian Church has a story to tell. It is the story of righting a wrong. It is the story of recovery, healing and growth. The world celebrates when wrongs are made right. The world embraces communities like ours that recover, heal and grow.

God is calling us to be a lamp unto the world.

We still have "A Charge to Keep and a God to Glorify."

Your Brother In Christ,
Pastor Phil



Update on the Stated Supply Pastor Search



A recommended Stated Supply Pastor candidate was presented and approved by Session on Monday, November 16th. The Personnel Committee will now be in discussion with the candidate to finalize Terms of Call. Then the candidate needs to be approved by the Committee on Ministry on December 8th.



IN-PERSON WORSHIP IN THE SANCTUARY

It is requested that you make a reservation to attend the Sunday morning worship services by calling the church office and speaking with Georgia, or leaving a message on the answering machine by noon the Saturday before each Sunday.

Sunday Services continue to be live-streamed:



You can watch them **live** at 9:30 using:

ZOOM <https://zoom.us/j/200521841> Password - **worship**

or Facebook <https://www.facebook.com/Websterpres/>

Or you can watch it **later** at your leisure using:

Facebook <https://www.facebook.com/Websterpres/>

or YouTube <https://www.youtube.com/channel/UCzM5-thYxua2HQSPF6P71wA>

Please continue to check your email regularly. This is the best way to stay updated with the latest news and opportunities that are available. If you don't have email, do not hesitate to call the church office, or find a friend who does have email that you can check with regularly. Monthly *Pathways* and important letters from Session will be sent via postal mail directly to your homes.

LOOKING A HEAD TO 2021



Our budget planning is now complete for 2021. We've received pledges from about 85 members or families with a total pledge of approximately \$325,000. A big thank you to everyone

who has pledged to support the mission and ministry of our church next year.

Session has approved the following budget for 2021. The reduced pledges will, of course, require a corresponding reduction in our spending. Some of the key decisions made include:

- We are only funding a single minister;
- We will be operating with a smaller staff and fewer hours;
- Mission spending is 11% of total income;
- We have minimal operating reserves, and major project spending will be "pay-as-you-go;"
- Program and general operating spending will be kept under a tight control.

At the same time, we identified two incremental investments that we feel are critical to ongoing operations: funding programs for healing and reconciliation, and an upgrade of the office IT infrastructure.

We presented additional details in the Adult Ed. program on November 22nd. If you have questions or comments, or would like more information, you can contact any member of the S&F committee or email Session at WPCSession1@gmail.com.

	Better(Worse)	
	2021	B/(W) than
	Budget	2020 budget
Income		
Pledges & gifts	327,519	(151,831)
Room use	8,400	(6,000)
Holley estate	20,000	1,500
Investment G/(L)	773	(2,877)
Endowment / reserve	9,061	(3,157)
Total	\$ 365,753	\$ (162,365)
Expense		
Ministers	91,097	115,112
Other personnel	77,323	21,283
Mission	40,000	71,300
Facility	65,075	10,425
Christian Ed	6,150	2,950
All other	32,541	(5,138)
Total	\$ 312,186	\$ 215,932
Surplus / (Deficit)	\$ 53,567	\$ 53,567
Ending cash balance	\$ 39,673	\$ (133,013)
Unencumbered cash	\$ 39,673	\$ 15,483



Learning for a Lifetime

ADVENT SERIES ON GRACE



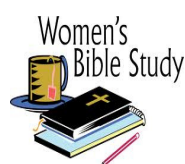
For Adult Ed in Advent, Pastor Phil will lead a 4-week interactive study on 'Grace'. He feels this is a relevant topic for our church at this time. We will talk about grace in

our relationships with each other as well as in our relationship with God.

It is recommended that people read the book *Grace: More Than We Deserve, Greater Than We Imagine* by Max Lucado to get the most from the series. (Books are available in the church office for \$8.) If you have the book, please read chapters 1 & 2 and the corresponding reader's guide in the back of the book. However, whether or not you have read the book, all are encouraged to attend the sessions!

The series will start on Sunday, November 29th, at 10:30 a.m. on Zoom and in the Sanctuary, and continue for the next 3 Sundays.

(<https://zoom.us/j/200521841>, password 'worship')



WOMEN'S BIBLE STUDY

We will celebrate ADVENT, the weeks to prepare once again for the birth of our Savior, with the following topics:

Dec. 1 – "Emmanuel"

Dec. 8 – "His Birth at Bethlehem"

Dec. 15 – "His Gift, Our Gifts"

Please join us in these three sessions Tuesday mornings at 10:00 on Zoom to prepare and open your hearts to the true reason for this joyful season. Especially during this time of Covid and changing traditions, we can celebrate the birth of the Christ Child anew.

<https://us02web.zoom.us/j/82074090899?pwd=UkZtS0tuMlh1TnFOeGtjclJVTGV0dz09>

DECEMBER LECTIONARY READINGS

December 6

Old Testament	<i>Isaiah 40:1-11</i>
Psalm	<i>Psalms 85:1-2, 8-13</i>
New Testament	<i>II Peter 3:8-15a</i>
Gospel	<i>Mark 1:1-8</i>

December 13

Old Testament	<i>Isaiah 61:1-4, 8-11</i>
Psalm	<i>Psalms 126</i>
New Testament	<i>I Thessalonians 5:16-24</i>
Gospel	<i>John 1:6-8, 19-28</i> <i>Luke 1:46b-55</i>

December 20

Old Testament	<i>II Samuel 7:1-11, 16</i>
Psalm	<i>Psalms 89:1-4, 19-26</i>
New Testament	<i>Romans 16:25-27</i>
Gospel	<i>Luke 1:26-38, 46b-55</i>

December 27

Old Testament	<i>Isaiah 61:10 – 62:3</i>
Psalm	<i>Psalms 148</i>
New Testament	<i>Galatians 4:4-7</i>
Gospel	<i>Luke 2:22-40</i>



December Memory Verse

Let the peace of Christ rule in your hearts, since as members of one body you were called to peace.

Colossians 3:15



We are a Giving Church



CHRISTMAS GIFT CARDS for the Men at Grace House

For many years we have collected Christmas gifts and gift cards for the men at Grace House and for their children. **However, this year due to Covid restrictions, they ask that we ONLY purchase and donate \$10 gift cards** to minimize handling and shopping. **Please do not wrap them** so that they can be distributed equitably to the men. Gift cards for fast food places such as McDonalds, Burger King, Wendy's, Taco Bell, Subway, Dunkin Donuts, Tim Horton's, etc., and for stores such as Target, Wal-Mart, TJ Maxx, Marshall's, Kohl's, etc. are appropriate. Please select gift cards for places that are either in Rochester or along major bus lines in suburbs such as Henrietta, Greece, Irondequoit, Brighton and Pittsford, as the men don't have cars.

We will be collecting from Sunday, November 22nd, until Sunday December 13th. Please bring your gift cards to the church office on a Sunday morning or on Tuesday, Wednesday or Thursday from 9 a.m. until 3 p.m. If you are unable to bring them to church, you can mail them to the office or contact Brad Adams by phone or text (698-3229) and someone will pick them up. Thank you!

CHRISTMAS JOY OFFERING

In December we will be accepting special gifts for the PCUSA Christmas Joy Offering. The offering distributes gifts equally to the Assistance Program of the Board of Pensions, providing critical financial support to church workers and their families, and to Presbyterian-related schools and colleges equipping communities of color with education and leadership development while nurturing racial and ethnic heritage. You may donate to this offering beginning December 6th using the special envelopes in the Sanctuary, by designating your gift on the church Web site, or by mailing your gift to the church office.



ANGEL TREE

The Deacons are sponsoring the Angel Tree again this year to benefit the Williamson Come-Unity Center. Our contributions over the last several years have been greatly appreciated. In the interest of keeping this as contact-free and safe as possible, we are going virtual this year! Instead of a Christmas tree in the Narthex with gift tags, there is a wish list set up on Amazon. You can scroll through and choose an item to order. When you proceed to check out, be sure to choose "Laura Oliver's Gift Registry Address" in the shipping options to have it sent directly to Laura Oliver's home.

https://www.amazon.com/hz/wishlist/ls/A24YBQ17OOQX?ref=wl_share

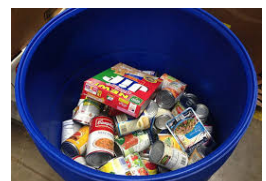
OR you can log in to Amazon and search for the "Williamson Come-Unity Center Angel Tree" list on Amazon.

If you choose to have the gift shipped to your home, or if you purchase a gift elsewhere, please bring your unwrapped items to church on Sunday, December 6th. We will be there during the service to collect gifts, and again later that day from 4-6 p.m. If these times don't work for you, or if you prefer us to pick up them from you, please contact Amy Vallone at 766-0417 or aevallone@yahoo.com.

In this season of giving, and in a year that has been so difficult for so many, help us remember these families with our gifts and prayers. Thank you!

FOOD DONATIONS

Webster Presbyterian Church Deacons are accepting non-perishable food, hygiene and cleaning product donations in our Food Barrel just inside the entrance in the upper Narthex. We especially request peanut butter, canned fruits, canned chili and meats, and pasta. These donations will be provided to the Hope House and the Free Little Food Pantries so we can help our neighbors in Webster that are struggling during this pandemic. Thank You!"



Winter Clothing for Cameron Community Ministries



From about mid-October until mid-November we collected and delivered four large van loads of warm winter clothing for Cameron Community Ministries, which is located in a very poor section of Rochester. Thank you very much for your generous contributions. They were greatly appreciated by Cameron!

OPERATION CHRISTMAS CHILD

A big "Thank You" to all those who brought shoeboxes for Operation Christmas Child. Twenty-one very happy children will have a special Christmas and feel the warmth and love that comes with the simple gifts you have sent. This is a way to open doors for an entire community to hear the message of love and redemption through Jesus Christ.

JESUS LOVES THE LITTLE CHILDREN



Adult Ed – Little Children of the Philippines/World

In late October, Glenna Waller and 3 of her staff members from Little Children of the Philippines/World (LCP) updated us via Zoom about their ministry to very poor children in the Philippines. We have supported this organization for almost 20 years via our church mission giving, and have been the sole supporter for a Soup Kitchen in Canday-ong for 35 to 40 undernourished school children. In addition, several of our members, several circles, and Children's Christian Ed sponsor individual children there. Tim and Virginia Schutt were very involved with originally connecting us to LCP and helping us start the soup kitchen.

LCP is Christ-centered and has a holistic approach with the children, nourishing them physically, spiritually and mentally. Currently they have over 800 sponsored children, and each year a number of their sponsored children graduate from high school or college and get meaningful jobs.

For more information, visit their website: www.littlechildren.org/

CHILDREN'S CHRISTIAN ED.



The Christmas season is a wonderful time when family and friends gather, share gifts of love, and share in the joy of being together. Our Christmas gatherings this year may be few and far between and will most likely be nothing like "the good old days." The world around us may have changed, but the story and the lesson of the baby born in a stable remains the same. Don't let the challenges of today keep you from sharing the story and the true meaning of Christmas with your children. We would like to help you do that. We will be delivering Christmas Activity Bags to the children in our Sunday School classes. The bags

will include coloring and activity pages as well as a few holiday craft and family activities. We will also be delivering both Kindergarten and 3rd grade Bibles to children in those grades this year. Keep watch each month for the CCE Newsletter "Footprints" which will always include a family outreach activity and family prayer. We continue to look ahead in prayer that a time will come when we can be back together again, ready to start our new SHINE Sunday morning program. We look forward to seeing everyone when that time comes.

POINSETTIAS FOR CHRISTMAS

Deacons will be taking orders for Poinsettias to decorate the church for Christmas service again this year. Orders may be placed by either going to the church website and clicking on the "Give" button and selecting "Poinsettia Fund," or by sending a check directly to the church office with a note that it is for Church Poinsettias and who you would like to donate this "in memory or honor of." The plants will be available to take home directly following the 5:00 p.m. Christmas Eve Service or after the December 27th Sunday service. Plants remaining in the Sanctuary after that time will be donated to WPC Friends at Home. A donation of \$15 per plant is being requested this year. Orders must be placed by December 15th.





YOUTH FELLOWSHIP

We spent all but one fellowship this fall outside, but with the dark, cold and snowy weather of our region it is hard to be outside each week. We have planned two fellowship events inside and one outside for December. Whether we are indoors or outdoors, please know your safety is our priority. We ask everyone to wear masks, wash or sanitize your hands and socially distance from each other while we are gathered together. We welcome everyone to join us in person but understand those that prefer to stay at home. We would welcome you to join us virtually. Just let me know and I will set up a computer to share our fellowship event with you while at home.

Come out for Fellowship from **4-6 pm** on **December 6**. **Jumbo sized games** will be huge fun to play with friends. We will spread around the Social Room to play Chinese checkers and other jumbo games of the participants' choosing.



The **Youth Fellowship Christmas Party** will be on **December 13** from **4 - 6 pm** in the Social Room. We will play holiday-themed games socially distant from one another. Many of you wanted to bake, but with restrictions we are going to have fun frosting cookies. Each participant will have separate cookies, frosting and a table to work from.



The gift exchange will be "White Elephant." Remember a "White Elephant" is something you already have but you are ready to part with. Use this as a chance to re-gift something from a previous holiday. The more unusual the item, the more fun we will have! You want to have the gift so crazy that people want to steal it! It is meant to be fun! Any one who wants to participate from home will just need to drop off a gift for the exchange and join us on-line. You would be able to choose a number and gift that would be delivered to you at the end of the event.

Sunday, **December 20**, we will sing **Christmas Carols** door to door to brighten the spirits of some of our members. We will be bringing the chimes to ring out with our voices. This event will be socially distanced outside from 4-6 p.m. Wear coats, hats, gloves and a headlamp.



Joy to the World!

All youth grades 6th through 12th are welcome and are always encouraged to bring friends to youth fellowship. Youth Fellowship permission forms are available outside the Youth Room or from Wanda <http://websterpres.org/files/Youth/YouthPermForm2016-17.pdf>. Please bring the completed form to the first event you attend.

Be sure to contact Wanda if you need to be added to the email distribution list and to join our Facebook group Webster Presbyterian Church Youth Fellowship.

Together in Fellowship & Service,

Wanda Nungesser
Director of Youth Ministries

youth@websterpres.org 585-414-1337



We are sad to announce the deaths of:

John Wadhams, Beth Petrino's father on October 19th

Long-time Church members -

Madeline Moss on October 29th

Anne Pollock on November 21st

Joyce Petz on November 23rd

**The
January Pathway
Deadline**

is Sunday, December 20TH

